

Products

DAF

111120

95 ATI - FRONT BUMPER

MATERIAL : RTM



COMPATIBLE VEHICLES

DAF 95 ATI

111140

95 ATI - CORNER BUMPER - RIGHT

MATERIAL : SMC



COMPATIBLE VEHICLES

DAF 95 ATI

111150

95 ATI - CORNER BUMPER - LEFT

MATERIAL : SMC



COMPATIBLE VEHICLES

DAF 95 ATI

111160

95 ATI - HEADLAMP FRAME - RIGHT

MATERIAL : SMC



COMPATIBLE VEHICLES

DAF 95 ATI

111170

95 ATI - HEADLAMP FRAME - LEFT

MATERIAL : SMC



COMPATIBLE VEHICLES

DAF 95 ATI

112100

95 ATI - STEP - RIGHT

MATERIAL : SMC



COMPATIBLE VEHICLES

DAF 95 ATI

112110

95 ATI - STEP - LEFT

MATERIAL : SMC



COMPATIBLE VEHICLES

DAF 95 ATI

113100

95 ATI - REAR MUDGUARD

MATERIAL : PLASTIC

OEM NO : 1328934-



COMPATIBLE VEHICLES

DAF 95 ATI

113120

95 ATI - TOP MUDGUARD

MATERIAL : PLASTIC



COMPATIBLE VEHICLES

DAF 95 ATI

121120

XF 95 - FRONT BUMPER

MATERIAL : SHEET METAL



COMPATIBLE VEHICLES

DAF XF 95

121140

XF 95 - BUMPER BRACKET

MATERIAL : SHEET METAL



COMPATIBLE VEHICLES

DAF XF 95

121700

XF 95 - SUN VISOR

MATERIAL : ACRYLIC



COMPATIBLE VEHICLES

DAF XF 95

121701

XF 95 - SUN VISOR - RED

MATERIAL : ACRYLIC



COMPATIBLE VEHICLES

DAF XF 95

121702

XF 95 - SUN VISOR - BLUE

MATERIAL : ACRYLIC



COMPATIBLE VEHICLES

DAF XF 95

121703

XF 95 - SUN VISOR - GREEN

MATERIAL : ACRYLIC



COMPATIBLE VEHICLES

DAF XF 95

121710

XF 95 - SUN VISOR BRACKET SET



MATERIAL : SHEET METAL

COMPATIBLE VEHICLES

DAF XF 95

122100

XF 95 - STEP - RIGHT



MATERIAL : SMC

COMPATIBLE VEHICLES

DAF XF 95

122110

XF 95 - STEP - LEFT



MATERIAL : SMC

COMPATIBLE VEHICLES

DAF XF 95

131120

85 - FRONT BUMPER

MATERIAL : SHEET METAL



COMPATIBLE VEHICLES

DAF	85
-----	----

131700

85 - SUN VISOR

MATERIAL : ACRYLIC



COMPATIBLE VEHICLES

DAF	85
-----	----

131701

85 - SUN - RED

MATERIAL : ACRYLIC



COMPATIBLE VEHICLES

DAF	85
-----	----

131702

85 - SUN - BLUE

MATERIAL : ACRYLIC



COMPATIBLE VEHICLES

DAF	85
-----	----

131703

85 - SUN - GREEN

MATERIAL : ACRYLIC



COMPATIBLE VEHICLES

DAF	85
-----	----

141120

XF105 - FRONT BUMPER

MATERIAL : SHEET METAL



COMPATIBLE VEHICLES

DAF	XF 105
-----	--------

151120

CF - FRONT BUMPER

MATERIAL : SHEET METAL



COMPATIBLE VEHICLES

DAF

CF

161120

CF 6 - FRONT BUMPER

MATERIAL : SHEET METAL



COMPATIBLE VEHICLES

DAF

CF 6

171120

XF 106 - FRONT BUMPER

MATERIAL : SHEET METAL



COMPATIBLE VEHICLES

DAF

XF 106

VOLVO

231700

FH 12 / FH 16 - SUN VISOR

MATERIAL : ACRYLIC



COMPATIBLE VEHICLES

VOLVO	FH 12
VOLVO	FH 16

231701

FH 12 / FH 16 - SUN VISOR - RED

MATERIAL : ACRYLIC



COMPATIBLE VEHICLES

VOLVO	FH 12
VOLVO	FH 16

231702

FH 12 / FH 16 - SUN VISOR - BLUE

MATERIAL : ACRYLIC



COMPATIBLE VEHICLES

VOLVO	FH 12
VOLVO	FH 16

231703

FH 12 / FH 16 - SUN VISOR - GREEN

MATERIAL : ACRYLIC



COMPATIBLE VEHICLES

VOLVO	FH 12
VOLVO	FH 16

231780

FH 12 / FH 16 - SUN VISOR BRACKET SET

MATERIAL : SHEET METAL



COMPATIBLE VEHICLES

VOLVO	FH 12
VOLVO	FH 16

203140

FH 12 / PREMIUM 440 - TOP MUDGUARD - LOW

MATERIAL : PLASTIC



COMPATIBLE VEHICLES

RENAULT	PREMIUM 440
VOLVO	FH 12

203100

FH 12 / PREMIUM 440 - REAR MUDGUARD



MATERIAL : PLASTIC

COMPATIBLE VEHICLES

RENAULT	PREMIUM 440
VOLVO	FH 12

203120

FH 12 / PREMIUM 440 - TOP MUDGUARD - LOW



MATERIAL : PLASTIC

COMPATIBLE VEHICLES

RENAULT	PREMIUM 440
VOLVO	FH 12

203130

FH 12 / PREMIUM 440 - TOP MUDGUARD - HIGH



MATERIAL : PLASTIC

COMPATIBLE VEHICLES

RENAULT	PREMIUM 440
VOLVO	FH 12

203160

FH 12 / PREMIUM 440 - REAR FENDER CUT - RIGHT



MATERIAL : PLASTIC

COMPATIBLE VEHICLES

RENAULT	PREMIUM 440
VOLVO	FH 12

203170

FH 12 / PREMIUM 440 - REAR FENDER CUT - LEFT



MATERIAL : PLASTIC

COMPATIBLE VEHICLES

RENAULT	PREMIUM 440
VOLVO	FH 12

231700

FH 12 / FH 16 - SUN VISOR

MATERIAL : ACRYLIC



COMPATIBLE VEHICLES

VOLVO	FH 12
VOLVO	FH 16

231701

FH 12 / FH 16 - SUN VISOR - RED

MATERIAL : ACRYLIC



COMPATIBLE VEHICLES

VOLVO	FH 12
VOLVO	FH 16

231702

FH 12 / FH 16 - SUN VISOR - BLUE

MATERIAL : ACRYLIC



COMPATIBLE VEHICLES

VOLVO	FH 12
VOLVO	FH 16

231703

FH 12 / FH 16 - SUN VISOR - GREEN

MATERIAL : ACRYLIC



COMPATIBLE VEHICLES

VOLVO	FH 12
VOLVO	FH 16

231780

FH 12 / FH 16 - SUN VISOR BRACKET SET

MATERIAL : SHEET METAL



COMPATIBLE VEHICLES

VOLVO	FH 12
VOLVO	FH 16

241410

V2 / V3 - CORNER PANEL - LEFT



MATERIAL : PLASTIC

COMPATIBLE VEHICLES

VOLVO	V3
VOLVO	V2

241400

V2 / V3 - CORNER PANEL - RIGHT



MATERIAL : PLASTIC

COMPATIBLE VEHICLES

VOLVO	V2
VOLVO	V3

241410

V2 / V3 - CORNER PANEL - LEFT



MATERIAL : PLASTIC

COMPATIBLE VEHICLES

VOLVO	V3
VOLVO	V2

241400

V2 / V3 - CORNER PANEL - RIGHT



MATERIAL : PLASTIC

COMPATIBLE VEHICLES

VOLVO	V2
VOLVO	V3

RENAULT

203100

FH 12 / PREMIUM 440 - REAR MUDGUARD



MATERIAL : PLASTIC

COMPATIBLE VEHICLES

RENAULT	PREMIUM 440
VOLVO	FH 12

203120

FH 12 / PREMIUM 440 - TOP MUDGUARD - LOW



MATERIAL : PLASTIC

COMPATIBLE VEHICLES

RENAULT	PREMIUM 440
VOLVO	FH 12

203130

FH 12 / PREMIUM 440 - TOP MUDGUARD - HIGH



MATERIAL : PLASTIC

COMPATIBLE VEHICLES

RENAULT	PREMIUM 440
VOLVO	FH 12

203140

FH 12 / PREMIUM 440 - TOP MUDGUARD - LOW



MATERIAL : PLASTIC

COMPATIBLE VEHICLES

RENAULT	PREMIUM 440
VOLVO	FH 12

203160

FH 12 / PREMIUM 440 - REAR FENDER CUT - RIGHT



MATERIAL : PLASTIC

COMPATIBLE VEHICLES

RENAULT	PREMIUM 440
VOLVO	FH 12

203170

FH 12 / PREMIUM 440 - REAR FENDER CUT - LEFT



MATERIAL : PLASTIC

COMPATIBLE VEHICLES

RENAULT	PREMIUM 440
VOLVO	FH 12

412140

PREMIUM 420 / 440 - LOWER FOOT STEP GRILLE -

MATERIAL : PLASTIC



COMPATIBLE VEHICLES

RENAULT	PREMIUM 440
RENAULT	PREMIUM 420

413000

PREMIUM 420 / 440 - TOP FOOT STEP GRILLE -

MATERIAL : PLASTIC



COMPATIBLE VEHICLES

RENAULT	PREMIUM 440
RENAULT	PREMIUM 420

422200

PREMIUM 440 - FRONT WHEEL FRONT

MATERIAL : PLASTIC



COMPATIBLE VEHICLES

RENAULT	PREMIUM 440
---------	-------------

421120

RENAULT 440 - FRONT BUMPER

MATERIAL : SMC



COMPATIBLE VEHICLES

RENAULT	PREMIUM 440
---------	-------------

421140

PREMIUM 440 - FRONT BUMPER COVER RH / LH

MATERIAL : PLASTIC



COMPATIBLE VEHICLES

RENAULT	PREMIUM 440
---------	-------------

421160

PREMIUM 440 - BUMPER CORNER - RIGHT

MATERIAL : SMC



COMPATIBLE VEHICLES

RENAULT	PREMIUM 440
---------	-------------

421170

PREMIUM 440 - BUMPER CORNER - LEFT

MATERIAL : SMC



COMPATIBLE VEHICLES

RENAULT

PREMIUM 440

421400

PREMIUM 440 - AIR DEFLECTOR - RIGHT

MATERIAL : PLASTIC



COMPATIBLE VEHICLES

RENAULT

PREMIUM 440

421410

PREMIUM 440 - AIR DEFLECTOR - LEFT

MATERIAL : PLASTIC



COMPATIBLE VEHICLES

RENAULT

PREMIUM 440

421700

PREMIUM 440 - SUN VISOR

MATERIAL : ACRYLIC



COMPATIBLE VEHICLES

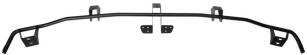
RENAULT

PREMIUM 440

421710

PREMIUM 440 - MOUNTING KIT BRACKET

MATERIAL : SHEET METAL



COMPATIBLE VEHICLES

RENAULT

PREMIUM 440

421720

PREMIUM 440 - MOUNTING KIT

MATERIAL : SHEET METAL



COMPATIBLE VEHICLES

RENAULT

PREMIUM 440

422110

PREMIUM 440 - STEP - LEFT



MATERIAL : SMC

COMPATIBLE VEHICLES

RENAULT	PREMIUM 440
---------	-------------

422210

PREMIUM 440 - FRONT WHEEL FRONT



MATERIAL : PLASTIC

COMPATIBLE VEHICLES

RENAULT	PREMIUM 440
---------	-------------

412150

PREMIUM 420 / 440 - LOWER FOOT STEP GRILLE -



MATERIAL : PLASTIC

OEM NO : 5010544026-

COMPATIBLE VEHICLES

RENAULT	PREMIUM 440
RENAULT	PREMIUM 420

412500

PREMIUM 420/440 - SHOES COVER - RIGHT



MATERIAL : SMC

COMPATIBLE VEHICLES

RENAULT	PREMIUM 440
RENAULT	PREMIUM 420

412510

PREMIUM 420/440 - SHOES COVER - LEFT



MATERIAL : SMC

COMPATIBLE VEHICLES

RENAULT	PREMIUM 440
RENAULT	PREMIUM 420

413010

PREMIUM 420 / 440 - TOP FOOT STEP GRILLE -



MATERIAL : PLASTIC

COMPATIBLE VEHICLES

RENAULT	PREMIUM 440
RENAULT	PREMIUM 420

422100

PREMIUM 440 - STEP - RIGHT



MATERIAL : SMC

COMPATIBLE VEHICLES

RENAULT	PREMIUM 440
---------	-------------

422500

PREMIUM 420 / 440 - DOOR PANEL - RIGHT



MATERIAL : SHEET METAL

COMPATIBLE VEHICLES

RENAULT	PREMIUM 420
RENAULT	PREMIUM 440

422510

PREMIUM 420 / 440 - DOOR PANEL - LEFT



MATERIAL : SHEET METAL

COMPATIBLE VEHICLES

RENAULT	PREMIUM 420
RENAULT	PREMIUM 440

422600

PREMIUM 440 - SIDE PANEL - RIGHT



MATERIAL : SHEET METAL

COMPATIBLE VEHICLES

RENAULT	PREMIUM 440
---------	-------------

422610

PREMIUM 440 - SIDE PANEL - LEFT



MATERIAL : SHEET METAL

COMPATIBLE VEHICLES

RENAULT	PREMIUM 440
---------	-------------

411180

PREMIUM 420 - HEADLIGHT CLIP



MATERIAL : PLASTIC

COMPATIBLE VEHICLES

RENAULT	PREMIUM 420
---------	-------------

412100

PREMIUM 420 - STEP - RIGHT



MATERIAL : SMC

COMPATIBLE VEHICLES

RENAULT	PREMIUM 420
---------	-------------

412110

PREMIUM 420 - STEP - LEFT



MATERIAL : SMC

COMPATIBLE VEHICLES

RENAULT	PREMIUM 420
---------	-------------

412160

PREMIUM 420 - CORNER LAMP RH / LH



MATERIAL : PLASTIC

COMPATIBLE VEHICLES

RENAULT	PREMIUM 420
---------	-------------

412170

PREMIUM 420 - CORNER LAMP SOCKET



MATERIAL : PLASTIC

COMPATIBLE VEHICLES

RENAULT	PREMIUM 420
---------	-------------

412700

PREMIUM 420 - MIRROR ARM RIGHT WITH



MATERIAL : SHEET METAL

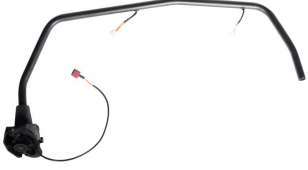
COMPATIBLE VEHICLES

RENAULT	PREMIUM 420
---------	-------------

412710

PREMIUM 420 - MIRROR ARM LEFT WITH MOTOR

MATERIAL : SHEET METAL



COMPATIBLE VEHICLES

RENAULT	PREMIUM 420
---------	-------------

412720

PREMIUM 420 - MIRROR ARM RIGHT WITHOUT

MATERIAL : SHEET METAL



COMPATIBLE VEHICLES

RENAULT	PREMIUM 420
---------	-------------

412730

PREMIUM 420 - MIRROR ARM LEFT WITHOUT

MATERIAL : SHEET METAL



COMPATIBLE VEHICLES

RENAULT	PREMIUM 420
---------	-------------

412140

PREMIUM 420 / 440 - LOWER FOOT STEP GRILLE -

MATERIAL : PLASTIC



COMPATIBLE VEHICLES

RENAULT	PREMIUM 440
RENAULT	PREMIUM 420

412150

PREMIUM 420 / 440 - LOWER FOOT STEP GRILLE -

MATERIAL : PLASTIC

OEM NO : 5010544026-



COMPATIBLE VEHICLES

RENAULT	PREMIUM 440
RENAULT	PREMIUM 420

412500

PREMIUM 420/440 - SHOES COVER - RIGHT

MATERIAL : SMC



COMPATIBLE VEHICLES

RENAULT	PREMIUM 440
RENAULT	PREMIUM 420

412510

PREMIUM 420/440 - SHOES COVER - LEFT

MATERIAL : SMC



COMPATIBLE VEHICLES

RENAULT	PREMIUM 440
RENAULT	PREMIUM 420

413000

PREMIUM 420 / 440 - TOP FOOT STEP GRILLE -

MATERIAL : PLASTIC



COMPATIBLE VEHICLES

RENAULT	PREMIUM 440
RENAULT	PREMIUM 420

413010

PREMIUM 420 / 440 - TOP FOOT STEP GRILLE -

MATERIAL : PLASTIC



COMPATIBLE VEHICLES

RENAULT	PREMIUM 440
RENAULT	PREMIUM 420

422500

PREMIUM 420 / 440 - DOOR PANEL - RIGHT

MATERIAL : SHEET METAL



COMPATIBLE VEHICLES

RENAULT	PREMIUM 420
RENAULT	PREMIUM 440

422510

PREMIUM 420 / 440 - DOOR PANEL - LEFT

MATERIAL : SHEET METAL



COMPATIBLE VEHICLES

RENAULT	PREMIUM 420
RENAULT	PREMIUM 440

432700

PREMIUM 370 - MIRROR ARM - RIGHT

MATERIAL : SHEET METAL



COMPATIBLE VEHICLES

RENAULT

PREMIUM 370

432710

PREMIUM 370 - MIRROR ARM - LEFT

MATERIAL : SHEET METAL



COMPATIBLE VEHICLES

RENAULT

PREMIUM 370

821700

RENAULT SYMBOL - 2013 - REAR MUDGUARD -



MATERIAL : SHEET METAL

COMPATIBLE VEHICLES

RENAULT

SYMBOL - 2013

821710

RENAULT SYMBOL - 2013 - REAR MUDGUARD -



MATERIAL : SHEET METAL

COMPATIBLE VEHICLES

RENAULT

SYMBOL - 2013

821800

RENAULT SYMBOL - 2013 - TRUNK LID



MATERIAL : SHEET METAL

COMPATIBLE VEHICLES

RENAULT

SYMBOL - 2013

441160

LANDER - BUMPER CORNER - RH

MATERIAL : SHEET METAL



COMPATIBLE VEHICLES

RENAULT

LANDER

441170

LANDER - BUMPER CORNER - LH

MATERIAL : SHEET METAL



COMPATIBLE VEHICLES

RENAULT

LANDER

SCANIA

302500

R - DOOR PANEL - RIGHT



MATERIAL : SHEET METAL

COMPATIBLE VEHICLES

SCANIA	R
--------	---

302510

R - DOOR PANEL - LEFT



MATERIAL : SHEET METAL

COMPATIBLE VEHICLES

SCANIA	R
--------	---

302620

R - REAR CORNER LONG - RIGHT



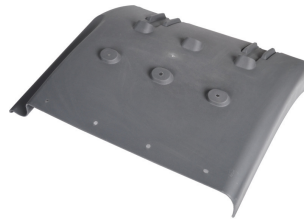
MATERIAL : SHEET METAL

COMPATIBLE VEHICLES

SCANIA	R
--------	---

303100

P / R - MUDGUARD - RIGHT



MATERIAL : PLASTIC

OEM NO : 1357600-

COMPATIBLE VEHICLES

SCANIA	R
SCANIA	P

302640

P / R - ROOF PANEL LOW - RIGHT



MATERIAL : SHEET METAL

COMPATIBLE VEHICLES

SCANIA	P
SCANIA	R

302650

P / R - ROOF PANEL LOW - LEFT



MATERIAL : SHEET METAL

COMPATIBLE VEHICLES

SCANIA	P
SCANIA	R

303110

P / R - MUDGUARD - LEFT



MATERIAL : PLASTIC

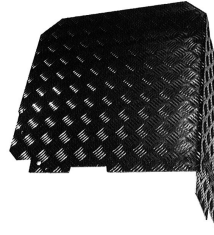
OEM NO : 1357599-

COMPATIBLE VEHICLES

SCANIA	P
SCANIA	R

303400

P / R - EXHAUST COVER



MATERIAL : SHEET METAL

COMPATIBLE VEHICLES

SCANIA	P
SCANIA	R

303420

4. SERIES / MUFFLE COVER



MATERIAL : PLASTIC

COMPATIBLE VEHICLES

SCANIA	P
SCANIA	R

302630

R - REAR CORNER LONG - LEFT



MATERIAL : SHEET METAL

COMPATIBLE VEHICLES

SCANIA	R
--------	---

303120

P / R - TOP MUDGUARD



MATERIAL : PLASTIC

COMPATIBLE VEHICLES

SCANIA	R
SCANIA	P

302600

P - REAR CORNER - RIGHT



MATERIAL : SHEET METAL

COMPATIBLE VEHICLES

SCANIA	P
--------	---

302640

P / R - ROOF PANEL LOW - RIGHT



MATERIAL : SHEET METAL

COMPATIBLE VEHICLES

SCANIA	P
SCANIA	R

302650

P / R - ROOF PANEL LOW - LEFT



MATERIAL : SHEET METAL

COMPATIBLE VEHICLES

SCANIA	P
SCANIA	R

303420

4. SERIES / MUFFLE COVER



MATERIAL : PLASTIC

COMPATIBLE VEHICLES

SCANIA	P
SCANIA	R

303110

P / R - MUDGUARD - LEFT



MATERIAL : PLASTIC

OEM NO : 1357599-

COMPATIBLE VEHICLES

SCANIA	P
SCANIA	R

302610

P - REAR CORNER - LEFT



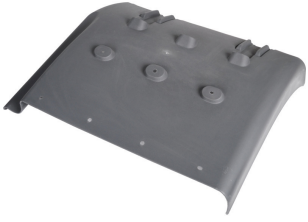
MATERIAL : SHEET METAL

COMPATIBLE VEHICLES

SCANIA	P
--------	---

303100

P / R - MUDGUARD - RIGHT



MATERIAL : PLASTIC

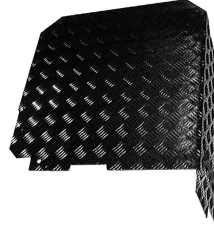
OEM NO : 1357600-

COMPATIBLE VEHICLES

SCANIA	R
SCANIA	P

303400

P / R - EXHAUST COVER



MATERIAL : SHEET METAL

COMPATIBLE VEHICLES

SCANIA	P
SCANIA	R

303120

P / R - TOP MUDGUARD



MATERIAL : PLASTIC

COMPATIBLE VEHICLES

SCANIA	R
SCANIA	P

302660

HIGHLINE - ROOF PANEL HIGH - RIGHT

MATERIAL : SHEET METAL



COMPATIBLE VEHICLES

SCANIA

HIGHLINE

302670

HIGHLINE - ROOF PANEL HIGH - LEFT

MATERIAL : SHEET METAL



COMPATIBLE VEHICLES

SCANIA

HIGHLINE

MERCEDES

622550

AXOR - DOOR TENSIONER - LEFT



MATERIAL : COMMODITY

COMPATIBLE VEHICLES

MERCEDES	AXOR
----------	------

622610

AXOR - SIDE PANEL - LEFT



MATERIAL : SHEET METAL

COMPATIBLE VEHICLES

MERCEDES	AXOR
----------	------

623700

AXOR - FRONT MUDGUARD - RIGHT



MATERIAL : SMC

COMPATIBLE VEHICLES

MERCEDES	AXOR
----------	------

622630

AXOR / 4140 / ATEGO - SIDE PANEL - LEFT



MATERIAL : SHEET METAL

COMPATIBLE VEHICLES

MERCEDES	ATEGO
MERCEDES	AXOR

603100

AXOR - MUDGUARD - REAR



MATERIAL : PLASTIC

OEM NO : A3755200020

COMPATIBLE VEHICLES

MERCEDES	AXOR
----------	------

603110

AXOR - REAR MUDGUARD (WITH BRACKET)



MATERIAL : PLASTIC

COMPATIBLE VEHICLES

MERCEDES	AXOR
----------	------

603120

AXOR - REAR MUDGUARD

MATERIAL : PLASTIC

OEM NO : A3755200007



COMPATIBLE VEHICLES

MERCEDES

AXOR

603140

AXOR - MUDGUARD COVER

MATERIAL : PLASTIC



COMPATIBLE VEHICLES

MERCEDES

AXOR

603220

AXOR - MOUNTING KIT

MATERIAL : SHEET METAL



COMPATIBLE VEHICLES

MERCEDES

AXOR

603230

AXOR - MOUNTING KIT

MATERIAL : SHEET METAL



COMPATIBLE VEHICLES

MERCEDES

AXOR

621120

AXOR - FRONT BUMPER - WHITE UNDERCOAT -

MATERIAL : SMC



COMPATIBLE VEHICLES

MERCEDES

AXOR

621121

AXOR - FRONT BUMPER - GREY - RIGHT

MATERIAL : SMC



COMPATIBLE VEHICLES

MERCEDES

AXOR

621130

AXOR - FRONT BUMPER - WHITE UNDERCOAT -



MATERIAL : SMC

COMPATIBLE VEHICLES

MERCEDES

AXOR

621131

AXOR - FRONT BUMPER - GREY - LEFT



MATERIAL : SMC

COMPATIBLE VEHICLES

MERCEDES

AXOR

621140

AXOR - FRONT BUMPER CUT - RIGHT



MATERIAL : SMC

COMPATIBLE VEHICLES

MERCEDES

AXOR

621150

AXOR - FRONT BUMPER CUT - LEFT



MATERIAL : SMC

COMPATIBLE VEHICLES

MERCEDES

AXOR

621600

AXOR - INNER PILLAR PANEL - RIGHT



MATERIAL : SHEET METAL

COMPATIBLE VEHICLES

MERCEDES

AXOR

621610

AXOR - INNER PILLAR PANEL - LEFT



MATERIAL : SHEET METAL

COMPATIBLE VEHICLES

MERCEDES

AXOR

621620

AXOR - ROOF FRONT PANEL

MATERIAL : SHEET METAL



COMPATIBLE VEHICLES

MERCEDES

AXOR

621640

AXOR - ROOF SIDE PANEL - RIGHT

MATERIAL : SHEET METAL



COMPATIBLE VEHICLES

MERCEDES

AXOR

621650

AXOR - ROOF SIDE PANEL - LEFT

MATERIAL : SHEET METAL



COMPATIBLE VEHICLES

MERCEDES

AXOR

622100

AXOR - STEP - GREY - RIGHT

MATERIAL : SMC



COMPATIBLE VEHICLES

MERCEDES

AXOR

622110

AXOR - STEP - GREY - LEFT

MATERIAL : SMC



COMPATIBLE VEHICLES

MERCEDES

AXOR

622120

AXOR - STEP - WHITE - RIGHT

MATERIAL : SMC



COMPATIBLE VEHICLES

MERCEDES

AXOR

622130

AXOR - STEP - WHITE - LEFT



MATERIAL : SMC

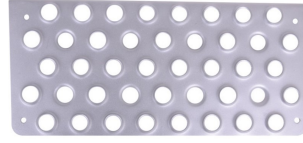
COMPATIBLE VEHICLES

MERCEDES

AXOR

622160

AXOR - FOOT STEP - UPPER



MATERIAL : SHEET METAL

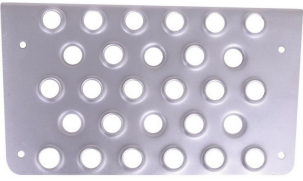
COMPATIBLE VEHICLES

MERCEDES

AXOR

622170

AXOR - FOOT STEP - LOWER



MATERIAL : SHEET METAL

COMPATIBLE VEHICLES

MERCEDES

AXOR

622180

AXOR / 4140 - FOOTSTEP - RIGHT



MATERIAL : SMC

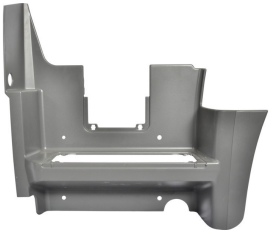
COMPATIBLE VEHICLES

MERCEDES

AXOR

622190

AXOR / 4140 - FOOTSTEP - LEFT



MATERIAL : SMC

COMPATIBLE VEHICLES

MERCEDES

AXOR

622200

AXOR - STEP - GREY - RIGHT



MATERIAL : SMC

COMPATIBLE VEHICLES

MERCEDES

AXOR

622210

AXOR - STEP - GREY - LEFT

MATERIAL : SMC

ARPACILAR
INDUSTRIAL DESIGN
& AUTOMOTIVE

COMPATIBLE VEHICLES

MERCEDES

AXOR

622220

AXOR - FOOTSTEP COVER

MATERIAL : PLASTIC



COMPATIBLE VEHICLES

MERCEDES

AXOR

622500

AXOR / 4140 - DOOR PANEL - RIGHT

MATERIAL : SHEET METAL



COMPATIBLE VEHICLES

MERCEDES

AXOR

622510

AXOR / 4140 - DOOR PANEL - LEFT

MATERIAL : SHEET METAL



COMPATIBLE VEHICLES

MERCEDES

AXOR

622530

AXOR / 4140 - DOOR - LEFT

MATERIAL : SHEET METAL



COMPATIBLE VEHICLES

MERCEDES

AXOR

622540

AXOR - DOOR TENSIONER - RIGHT

MATERIAL : COMMODITY



COMPATIBLE VEHICLES

MERCEDES

AXOR

622600

AXOR - SIDE PANEL - RIGHT



MATERIAL : SHEET METAL

COMPATIBLE VEHICLES

MERCEDES

AXOR

622640

AXOR - EXTERIOR PILLAR - RIGHT



MATERIAL : SHEET METAL

COMPATIBLE VEHICLES

MERCEDES

AXOR

623710

AXOR - FRONT MUDGUARD - LEFT



MATERIAL : SMC

COMPATIBLE VEHICLES

MERCEDES

AXOR

622520

AXOR / 4140 - DOOR - RIGHT



MATERIAL : SHEET METAL

COMPATIBLE VEHICLES

MERCEDES

AXOR

622650

AXOR - EXTERIOR PILLAR - LEFT



MATERIAL : SHEET METAL

COMPATIBLE VEHICLES

MERCEDES

AXOR

623200

AXOR - REAR PANEL - WITH GLASS HOLE



MATERIAL : SHEET METAL

COMPATIBLE VEHICLES

MERCEDES

AXOR

623210

AXOR - REAR PANEL - WITHOUT GLASS HOLE

MATERIAL : SHEET METAL



COMPATIBLE VEHICLES

MERCEDES

AXOR

623260

AXOR - REAR PANEL BRACKET SET

MATERIAL : SHEET METAL



COMPATIBLE VEHICLES

MERCEDES

AXOR

622620

AXOR / 4140 / ATEGO - SIDE PANEL - RIGHT

MATERIAL : SHEET METAL



COMPATIBLE VEHICLES

MERCEDES

ATEGO

MERCEDES

AXOR

622112

AXOR - STEP - PRIMER WHITE - RIGHT

MATERIAL :



COMPATIBLE VEHICLES

MERCEDES

AXOR

622113

AXOR - STEP - PRIMER WHITE - LEFT

MATERIAL :



COMPATIBLE VEHICLES

MERCEDES

AXOR

622660

AXOR / 4140 / ATEGO - ROOF PANEL

MATERIAL :



COMPATIBLE VEHICLES

MERCEDES

AXOR

MERCEDES

ATEGO

612100

ACTROS - STEP - RIGHT

MATERIAL : SMC



COMPATIBLE VEHICLES

MERCEDES

ACTROS

612110

ACTROS - STEP - LEFT

MATERIAL : SMC



COMPATIBLE VEHICLES

MERCEDES

ACTROS

622630

AXOR / 4140 / ATEGO - SIDE PANEL - LEFT



MATERIAL : SHEET METAL

COMPATIBLE VEHICLES

MERCEDES	ATEGO
MERCEDES	AXOR

632610

ATEGO - SIDE PANEL - LEFT



MATERIAL : SHEET METAL

COMPATIBLE VEHICLES

MERCEDES	ATEGO
----------	-------

622620

AXOR / 4140 / ATEGO - SIDE PANEL - RIGHT



MATERIAL : SHEET METAL

COMPATIBLE VEHICLES

MERCEDES	ATEGO
MERCEDES	AXOR

632500

ATEGO / 1840 - DOOR PANEL - RIGHT



MATERIAL : SHEET METAL

COMPATIBLE VEHICLES

MERCEDES	ATEGO
----------	-------

632510

ATEGO / 1840 - DOOR PANEL - LEFT



MATERIAL : SHEET METAL

COMPATIBLE VEHICLES

MERCEDES	ATEGO
----------	-------

632530

ATEGO / 3228 - DOOR - LEFT



MATERIAL : SHEET METAL

COMPATIBLE VEHICLES

MERCEDES	ATEGO
----------	-------

632600

ATEGO - SIDE PANEL - RIGHT



MATERIAL : SHEET METAL

COMPATIBLE VEHICLES

MERCEDES	ATEGO
----------	-------

632520

ATEGO / 3228 - DOOR - RIGHT



MATERIAL : SHEET METAL

COMPATIBLE VEHICLES

MERCEDES	ATEGO
----------	-------

622660

AXOR / 4140 / ATEGO - ROOF PANEL

MATERIAL :



COMPATIBLE VEHICLES

MERCEDES	AXOR
MERCEDES	ATEGO

DACIA

811700

DACIA LOGAN - REAR MUDGUARD - RIGHT



MATERIAL : SHEET METAL

COMPATIBLE VEHICLES

DACIA

LOGAN

811710

DACIA LOGAN - REAR MUDGUARD - LEFT



MATERIAL : SHEET METAL

COMPATIBLE VEHICLES

DACIA

LOGAN

811800

DACIA LOGAN - TRUNK LID



MATERIAL : SHEET METAL

COMPATIBLE VEHICLES

DACIA

LOGAN

811810

DACIA LOGAN II - TRUNK LID

MATERIAL : SHEET METAL



COMPATIBLE VEHICLES

DACIA

LOGAN II

811820

DACIA LOGAN II - TRUNK LID WITH NICKEL

MATERIAL : SHEET METAL



COMPATIBLE VEHICLES

DACIA

LOGAN II

811720

MCV - REAR MUDGUARD WITH GLASS HOLE -



MATERIAL : SHEET METAL

COMPATIBLE VEHICLES

DACIA LOGAN MCV

811730

MCV - REAR MUDGUARD WITH GLASS HOLE -



MATERIAL : SHEET METAL

COMPATIBLE VEHICLES

DACIA LOGAN MCV

811740

MCV - REAR MUDGUARD WITHOUT GLASS HOLE -



MATERIAL : SHEET METAL

COMPATIBLE VEHICLES

DACIA LOGAN MCV

811750

MCV - REAR MUDGUARD WITHOUT GLASS HOLE -



MATERIAL : SHEET METAL

COMPATIBLE VEHICLES

DACIA LOGAN MCV